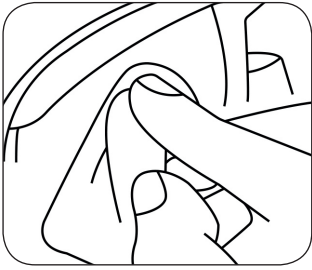
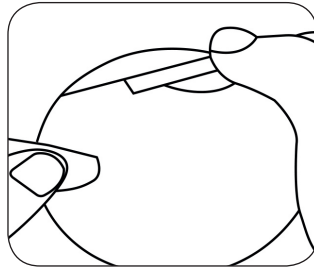


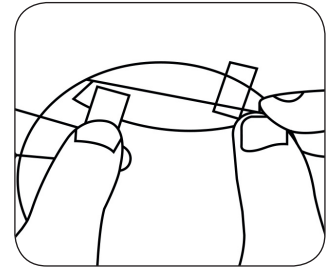
DE Installationsanleitung:



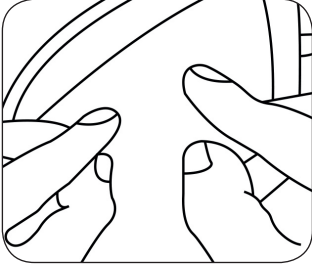
1. Reinigen Sie den Staub auf dem Spiegel



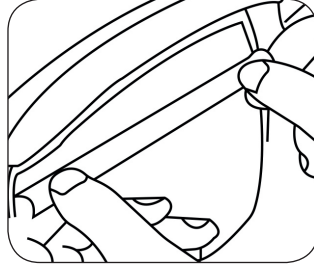
2. Suchen Sie die Etikettenebene Nr. 1



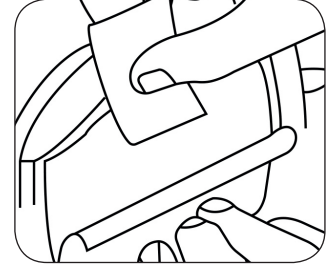
3. Reißen Sie die Etikettenebene Nr. 1 ab



4. Installieren Sie den Film auf dem Spiegel

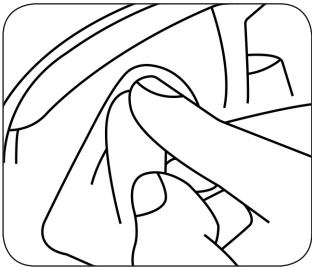


5. Reißen Sie die Etikettenebene Nr. 2 ab

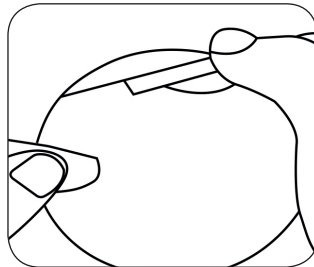


6. Entferne die Blasen

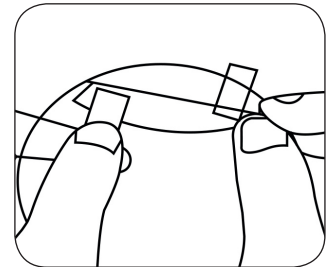
FR Instructions d'installation:



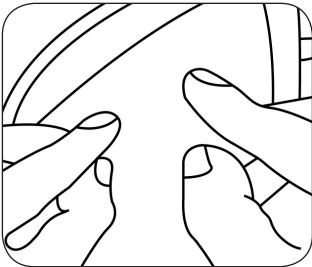
1. Nettoyer les poussières du rétroviseur



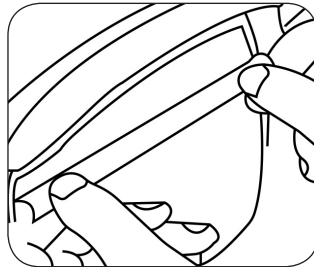
2. Trouver la couche d'étiquette n ° 1



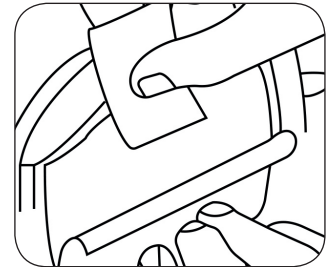
3. Détachez la couche d'étiquettes n ° 1



4. Installer le film sur le rétroviseur



5. Détachez la couche d'étiquettes n ° 2

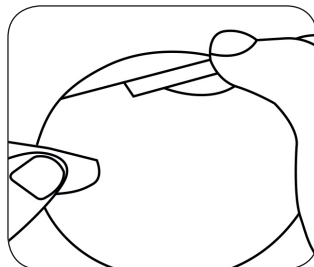


6. Enlevez les bulles

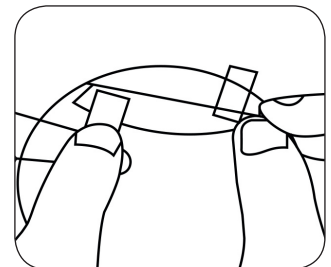
NL Installatie instructies:



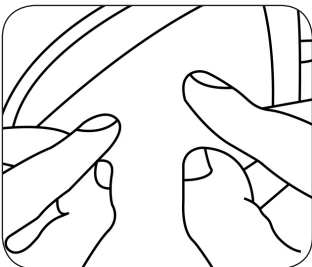
1. Reinig het stof op het scherm



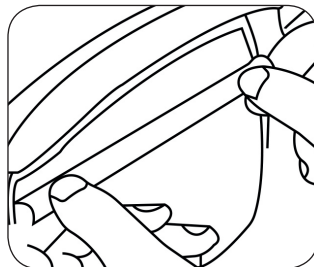
2. Zoek de labellaag nummer 1



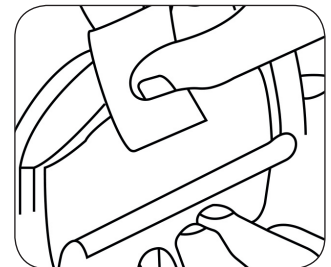
3. Scheur de labellaag nr. 1 af



4. Installeer de film op het scherm



5. Scheur de labellabel nr. 2 af



6. Verwijder de bubbels